



# PRODUCT CATALOGUE

HANDS PROTECTED;  
WORK PERFECTED

**P** Just 1  
Predator<sup>by RON</sup>





# WORK GLOVES TO SUIT ALL APPLICATIONS

At Just 1 Source & Supply, we stock a vast and varied range of protective work gloves, whether you're in; Construction, Engineering, Welding or even the Medical Sector, browse our catalogue for the perfect gloves for your task.

# CONTENTS

<b>Our History (Roadmap)</b>	Page 4
<b>Who is Ron Simpson?</b>	Page 5
<b>Why Stock Just 1 Source?</b>	Page 6
<b>Focus on End User Policy &amp; Visits</b>	Page 7
<b>Sustainability</b>	Page 8
<b>Different Types of Coatings</b>	Page 10
<b>Glove Size Guide</b>	Page 11
<b>Coloursafe</b>	Page 12
<b>Touchsafe</b>	Page 22
<b>Planetsafe</b>	Page 26
<b>Watersafe</b>	Page 32
<b>Welding Gloves</b>	Page 38
<b>Drivers</b>	Page 52
<b>Riggers</b>	Page 56
<b>Miscellaneous</b>	Page 64
<b>Specialist</b>	Page 70
<b>Disposable</b>	Page 74
<b>Understanding Mechanical Standards</b>	Page 82
<b>Our Team</b>	Page 88
<b>Bespoke/Own Branding - Why us?</b>	Page 89
<b>Marketing and Retail Stands</b>	Page 89
<b>Logistics &amp; Warehousing</b>	Page 90
<b>Online Orders and the Just 1 App</b>	Page 91
<b>Accreditations and Memberships</b>	Page 92
<b>Buying Groups</b>	Page 93
<b>A Message from our MD</b>	Page 95



# OUR HISTORY



**2008**

JUST 1 SOURCE & SUPPLY INCORPORATED



**2009**

SIGNATURE RANGE OF PRODUCTS BROUGHT TO MARKET



**2010**

100<sup>TH</sup> DISTRIBUTOR PARTNER BROUGHT ON BOARD



**2015**

COLOURSAFE RANGE LAUNCHED



**2013**

BECAME APPROVED SUPPLIERS TO TROY



**2012**

£1 MILLION TURNOVER ACHIEVED



**2015**

BECAME APPROVED SUPPLIERS TO NMBS



**2016**

WATERSAFE RANGE LAUNCHED



**2018**

£4 MILLION TURNOVER ACHIEVED



**2021**

MERCATOR RANGE ADDED TO THE PORTFOLIO



**2020**

OPENED OUR SECOND WAREHOUSE



**2019**

TOUCHSAFE RANGE LAUNCHED



**2022**

BECAME APPROVED SUPPLIERS TO THE PDP MEMBERSHIP



**2023**

14 EXHIBITIONS ATTENDED TO SUPPORT OUR NETWORK OF DISTRIBUTORS



**2024**

NEW B2B PORTAL LAUNCHED





# WHO IS RON SIMPSON?



Ron Simpson is the name behind Predator by Ron, with many knowing Ron from his illustrious career where he worked for notable names such as; James North, Spring Grove, UCM and PCDA (Protective Clothing Distributors Association). It is within these companies that Ron gained the knowledge, experience and confidence to launch M.W.T International, where the Tiger range was originally brought to market.

At the time, M.W.T International were one of the leaders in innovation in the hand protection market and this quickly promoted the company and brand in front of many power houses. Due to Ron's superb product designs & sourcing ability, he was able to offer an optimal mix of quality & price, which led to the company being acquired in 2007.

Ron soon identified that he still had the desire and passion to run his own company and began to explore ways to do this. Due to his previous working relationship

with Dave Lawson (CEO of Just 1 Source & Supply), they decided that they would collaborate Ron's extensive knowledge of the Hand Protection Market, with Dave's logistics and warehousing abilities to create Just 1 Source & Supply in 2008.

When the venture first started, Ron was pre-selling products from containers that were still on water, but due to his valued relationships with many customers and focus on quality products the business began to flourish and we are grateful that we still trade with many of these initial customers. The core value Ron instilled in the company of quality & price being viewed as inter-reliant, is still ever present in Just 1 Source & Supply.

Ron led the company for many years and has since retired but is still a regular at the board meeting with his insight still widely utilised to guide us forward.



# WHY STOCK JUST 1 SOURCE?



Scan to view our territory map

## Dedicated Technical & Account Management

Here at Just 1 Source & Supply we have a team of hand protection specialists, with regionalised support ready to assist you and your team. Whether you need help understanding the range and which products are right for you to stock, or would like to complete joint sales calls.

## Customer Service Like No Other

Our linchpin for success since 2008 has been our focus on Customer Service, which stems from our humble family beginnings. We strive to reply to your email enquiries within 4 hours and we are readily available on the phone between 08:30-17:00 (Mon-Fri).

Our Customer Service team is led by Christy, with Jesse & Laura Marie completing the team. All of the team are fully trained to help with any enquiry you may have and can signpost you to relevant resources where applicable.

## Comprehensive Range

We have spent years developing and refining a tight but effective range of products to cover 95% of applications in an attempt to reduce duplication and confusion. This reduces the multiple stocking of similar items and allows you to focus on a core offering for your customers in turn.

Our range now covers; Cut Protection, Chemical Protection, Heat protection and even NeedleStick, we are confident we have an offering which can help.

## Trusted Manufacturer

It is of vital importance for us to be responsible within all our sourcing and distribution. As a result, we have been a longstanding member of the BSIF and have now signed up to Positive Planet to ensure we are reducing our carbon impact.

In addition, we only source from factories with accreditation, with us also completing annual audits to ensure compliance to our inhouse standards.





# FOCUS ON END USER POLICY & VISITS

## End User Policy

We have a simple and strict policy on trading with End Users, 'We do not trade direct, choosing to only supply our products through our network of distribution partners'.

What does this mean for you:

- > We will not open a direct trading account if you intend to utilise the gloves for your team only.
- > We can dropship orders to your customer, without the fear of us following up and trading with them directly.
- > We can support your sales team with joint calls, allowing us to showcase the range in-depth with your customer and work on specifications.

## Joint Calls & Sales Training

As a trained team of hand protection specialists, we often support our customers by completing End User engagement. Whether the lead comes from one of the Trade Exhibitions we attend, or from your customer base, we strive to provide advice on the right solution for the application.

We can visit end user sites, audit the current tasks being undertaken and make a list of suggestions based on the associated risks.

Additionally, we regularly provide Teams & Face to Face training sessions. These can be a great way to refresh your teams knowledge or refocus on Hand Protection, as the glove market is one of the largest consumable markets in the world, it makes sense to understand your part within it, let us help!

Why not get in touch to find out how we can support.

# SUSTAINABILITY

## AT JUST 1 SOURCE & SUPPLY

We as many others, are on a journey to improve our ways of working to prevent damage to our environment so that generations to come don't suffer as a result of our actions. We know and understand

that being more sustainable must be a focus within our business and this needs carefully balanced with maintaining our current level of operations, which is why we have a strategic plan in place for 2030.

### Our current Sustainability Successes:

- > Transitioned over 50% of our vehicles to electric or hybrid
- > All waste cardboard & plastic is collected and recycled at our Head Office, with WFH staff encouraged to do the same.
- > We partner with Mercator for the production of our disposable range of products, who are considered one of the world leaders for sustainable production in the glove market.
- > New products being launched from July 2023 will be brought in without single use plastic in the packaging, where possible. With all current products, we are aiming to remove single use plastic by 2026, where possible.
- > In 2023 we enlisted the help of Positive Planet to measure our Carbon Footprint and begin a Carbon Reduction Strategy.
- > Our Warehouse & Logistics Partner currently have a strategic plan in place to reduce their Carbon Footprint and ensure that waste generated (Plastic/Cardboard/Pallets) is recycled responsibly.

### Areas we can improve:

- > Currently over 75% of our range have plastic packaging, which although is recyclable we want to eliminate plastic from our packaging.
- > Vast majority of our products arrive via sea freight, with a small percentage being air freighted.
- > Convert all vehicles to hybrid or Electric.
- > Develop & deliver a range of sustainable products created from sustainable materials ahead of 2025.

We know we can always do more and would be keen to get involved in any community engagement/sustainable projects that you or your customers may be involved within.

Please contact our Sustainability Champion, Christy at [marketing@just1source.com](mailto:marketing@just1source.com) with any ideas and/or information.





# DIFFERENT TYPES OF COATING

Coated knitted work gloves offer a wide spectrum of protection against a multitude of different risks, with each glove having its own certification to define the level of protection and areas of use.

Each coating option has varying benefits, choosing the right coating can help make your task easier and reduce hand fatigue. Below we have highlighted the key features and benefits of each coating we utilise in the Predator Range.

## POLYURETHANE (PU)

Polyurethane (or PU) allows for an exceptionally dexterous finished product as it impregnates the liner, allowing it to be exceptionally comfortable and tactile for the wearer.

By coating a glove liner in PU, this makes the surface of the glove tacky. As a result, it offers more effective grip, making it great for industries that handle smooth and/or slippery objects.

PU is a cost-effective coating and is often considered the best option for general handling applications.

PU does not generally comply with EN1186, meaning that it is often not a suitable option with use in and around the Food Industry.

## NITRILE

Nitrile coatings perform best with oils and grease when compared to PU or Latex - Nitrile also offers great abrasion resistance when compared to other coating types.

Nitrile can be processed in different ways; with our gloves featuring Smooth, Foam, MicroFoam and Sandy versions.

**Smooth** – Very durable, unrivalled grip in dry conditions, water resistant, economical.

**Microfoam/ Foam** – excellent grip in wet, dry and oily conditions, very durable, increased comfort and fit, more breathability (Microfoam has smaller 'bubbles' which further increases dexterity and breathability beyond Foam).

**Sandy** – High abrasion resistance, more durable than standard nitrile, granular finish for grip.

## LATEX

Latex coated gloves are excellent in dry conditions, providing excellent grip and are often seen as the most durable coating option, albeit often the thickest coating.

Like Nitrile, Latex can be processed in different ways to give different finishes and benefits. We use different types of latex coatings in our product range with options including Crinkle, Foam, and Sandy.

**Crinkle** – Dry grip enhanced by crinkle finish, strong and robust, hard wearing.

**Foam** – Conform to wearers hand, durable and comfortable, increased breathability.

**Sandy** – High abrasion resistance, more durable than crinkle latex, granular finish for grip.

## POLYMAX™

We always strive to identify solutions and this has led us to introduce Polymax™ coated products to our range, the first in the UK to do so.

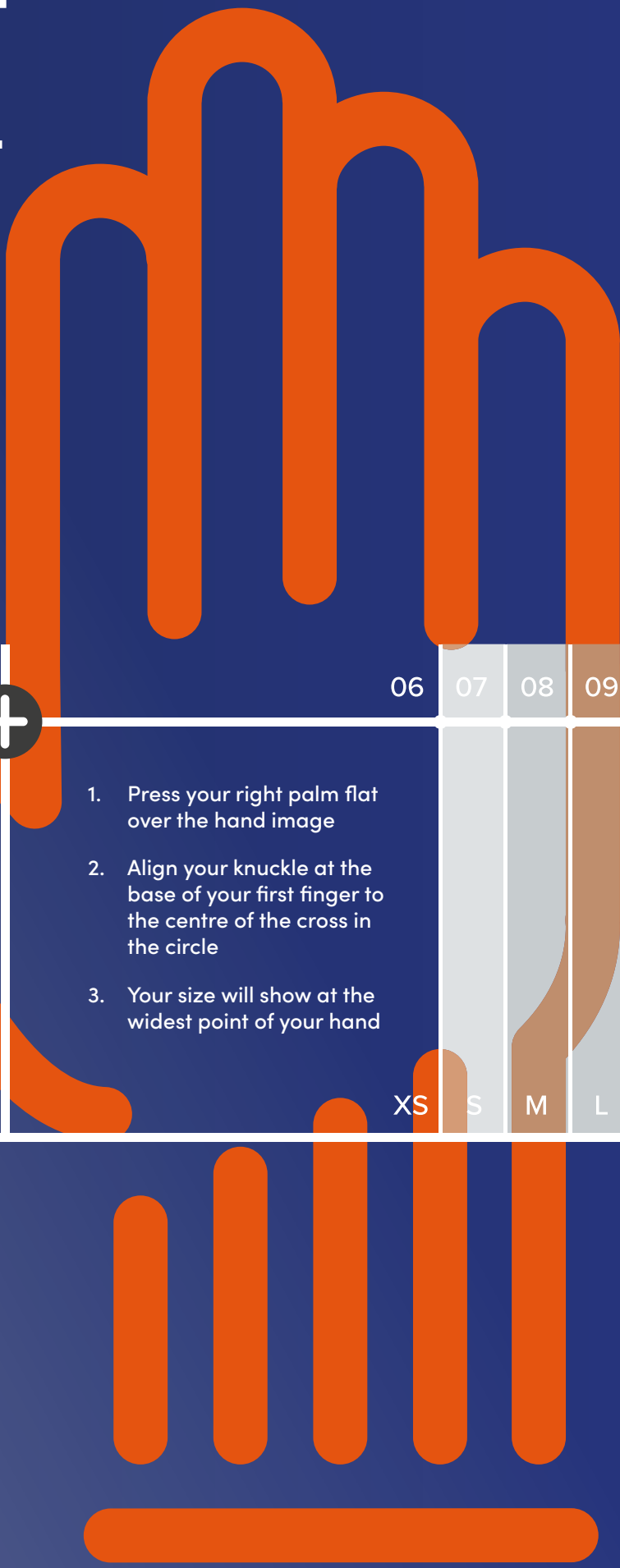
Polymax™ is an environmentally friendly, highly durable and flexible coating which offers great abrasion resistance, amongst many other benefits.

Polymax™ has the ability to absorb oil and repel water to reduce slips and hand fatigue, as well as being both Touchscreen Compatible and safe to use with/around Food and Food Materials.

Polymax™ offers superior abrasion and comfort compared to all alternate coatings, meaning we only use it within our highest quality Touchsafe Range.



# GLOVE SIZING CHART



06 07 08 09 10 11 12

XS S M L XL 2XL 3XL

+

1. Press your right palm flat over the hand image
2. Align your knuckle at the base of your first finger to the centre of the cross in the circle
3. Your size will show at the widest point of your hand

Please be aware that this chart serves as a general reference. Various materials and design features can affect the required size, and different glove styles may have different sizing standards. For instance, when ordering a fully dipped or coated glove, it is recommended to choose the next size up since these gloves tend to be stiffer.

**COLOURSAFE**

# SAFETY DOESN'T HAVE TO BE UNCOMFORTABLE

We have spent years designing, trialing, and manufacturing a range of products that not only offer a safe solution, but can be worn all day; again, and again. With Cut Ratings from A-F and multiple coating options to get the right abrasion resistance for you, find your solution overleaf.



# COLOURSAFE GLOVES

---

PUPL	Pred Ruby	Page 14
BLACK-PUPL	Pred Jet	Page 14
NSPL	Pred Scarlet	Page 16
NFPL-R	Pred Cardinal	Page 16
2-LCTC	Pred Amber	Page 17
LCTC-TD	Pred Paws	Page 18
CWP	Pred Winter Paws	Page 18
PUUH-13	Pred Emerald	Page 19
PU13D	Pred Delta	Page 19
HD-NSUH	Pred Pine	Page 20
NFUH-R	Pred Mint	Page 20
PRED 13	Pred Sapphire	Page 21

**RUBY (PUPL)**

- 13 gauge seamless Polyester Liner
- High quality Polyurethane (PU) palm coating
- The perfect general handling glove
- Extremely lightweight, comfortable and dexterous
- Breathable back
- Also available in all black (Pred Jet)
- Elasticated, coloured cuff for size indication

EN388:2016  
+ A1:2018



4141A



Sizes: S-XXL  
Carton Quantity: 120 Pairs

**JET (BLACK-PUPL)**

- 13 gauge seamless Polyester Liner
- High quality Polyurethane (PU) palm coating
- The perfect general handling glove
- Extremely lightweight, comfortable and dexterous
- Breathable back
- Also available with a red liner (Pred Ruby)
- Elasticated, coloured cuff for size indication

**VEND READY**

EN388:2016  
+ A1:2018



4141A



Sizes: XS-XXL  
Carton Quantity: 120 Pairs







## SCARLET (NSPL)



- 13 gauge seamless Polyester Liner
- Smooth Nitrile palm coating offers good resistance to Oils and Grease
- Great for general handling
- Extremely lightweight, comfortable and dexterous
- Breathable back
- Elasticated, coloured cuff for size indication

EN388:2016  
+ A1:2018



4132A

UK  
CA  
CE

Sizes: S-XXL  
Carton Quantity: 120 Pairs



## CARDINAL (NFPL-R)



- 13 gauge seamless, ribbed Polyester Liner
- Nitrile Foam palm coating offers good resistance to Oils and Grease
- Ribbed Liner offers enhanced grip
- Great for general handling
- Extremely lightweight, comfortable and dexterous
- Breathable back
- Contact Heat Level 1
- Elasticated, coloured cuff for size indication

EN388:2016  
+ A1:2018



4121X

EN407:2020



X1XXXX

UK  
CA  
CE

Sizes: M-XXL  
Carton Quantity: 120 Pairs







## AMBER (2-LCTC)



- 2 Strand seamless Polycotton Liner
- High quality Latex palm coating
- Breathable back
- Extremely lightweight, comfortable and dexterous
- Elasticated, coloured cuff for size indication

EN388:2016  
+ A1:2018



2131A



Sizes: S-XXL  
Carton Quantity: 120 Pairs



## PAWS (LCTC-TD)



- 5 Strand seamless Polycotton Liner
- High quality Latex palm coating
- Double-dipped fingertips for increased wear and life-span
- Breathable back
- Extremely lightweight, comfortable and dexterous
- Elasticated, coloured cuff for size indication

EN388:2016  
+ A1:2018



2244B



UK  
CA  
CE

Sizes: S-XXL  
Carton Quantity: 120 Pairs



## WINTER PAWS (CWP)



- 7 gauge Thermal Acrylic-loop, Bright Yellow Liner
- High quality Latex palm coating
- Double-dipped fingertips for increased wear and life-span
- Contact Cold Resistant Level 1
- Breathable back
- Extended elasticated, coloured cuff for size indication

EN388:2016  
+ A1:2018



1243X

EN511:2006



X10



CE

Sizes: M-XXL  
Carton Quantity: 120 Pairs





## EMERALD (PUUH-13)



- 13 gauge seamless Azura & Polyester Liner
- High quality Polyurethane (PU) palm coating
- The perfect general handling glove where cut protection is required
- Extremely lightweight, comfortable and dexterous
- Breathable back
- Elasticated, coloured cuff for size indication

EN388:2016  
+ A1:2018



4X43C



Sizes: S-XXL  
Carton Quantity: 120 Pairs



## DELTA (PU13D)



- 13 gauge Azura & Spandex liner
- Great quality PU palm coating
- Increased cut protection compared to the Pred Emerald (C)
- Breathable Back
- Elasticated, coloured cuff for size indication

EN388:2016  
+ A1:2018



4X42D



Sizes: XS-XXL  
Carton Quantity: 120 Pairs



**PINE (HD-NSUH)**

- 10 gauge seamless Azura & Polyester Liner
- Heavy-Duty Smooth Nitrile palm coating
- Smooth Nitrile offers good resistance to oils and grease
- Proven track record in the Waste Management Industry
- Extremely lightweight, comfortable and dexterous
- Breathable back
- Elasticated, coloured cuff for size indication

EN3888:2016  
+ A1:2018



4X44C

UK  
CA  
CE

Sizes: S-XXL  
Carton Quantity: 120 Pairs

**MINT (NFUH-R)**

- 13 gauge seamless, ribbed Azura & Polyester Liner
- Nitrile Foam palm coating offers good resistance to oils and grease
- Ribbed Liner offers enhanced grip
- Extremely lightweight, comfortable and dexterous
- Breathable back
- Contact Heat Level 1
- Elasticated, coloured cuff for size indication

EN3888:2016 EN407:2020  
+ A1:2018



4X44C



X1XXXX

UK  
CA  
CE

Sizes: M-XXL  
Carton Quantity: 120 Pairs







## SAPPHIRE (PRED 13)

VEND READY



- 13 gauge seamless HPPE, Steel, Polyester & Spandex Liner
- High quality Polyurethane (PU) palm coating
- Maximum Cut Level F Protection
- Extremely lightweight, comfortable and dexterous
- Breathable back
- Elasticated, coloured cuff for size indication

EN3888:2016  
+ A1:2018



4X43F

UK  
CA  
CE

Sizes: S-XXL  
Carton Quantity: 120 Pairs







**TOUCHSAFE**

# INCREASED PROTECTION, REDUCED DOWNTIME

Our Touchsafe gloves are some of the most exciting in our portfolio, with some featuring patented technology and our revolutionary PolyMAX™ coating which increases protection, reduces downtime and ultimately offers numerous cost-in-use benefits.



# TOUCHSAFE

---

TS1	Pred Sensor	Page 24
SN13DTQ	Pred Sigma	Page 24
TS4	Pred Impact	Page 25
MF15A	Pred Graphite	Page 25





## SENSOR (TS1)



- Cut 1 Nylon and Spandex Liner with Revolutionary PolyMax™ palm coating
- Highly Dexterous (15 gauge)
- 360° Comprehensive Breathability
- Great grip in light Oily applications
- Whole palm area compatible with Touchscreens
- Suitable for use in wet or dry conditions
- Suitable for use in Food Industries
- Incredibly hard-wearing, high performance abrasion resistance
- Extremely lightweight and comfortable
- Elasticated, coloured cuff for size indication

EN388:2016

+ A1:2018



4131X

EN1186

UK  
CA  
CE

Sizes: XS-XXL

Carton Quantity: 120 Pairs



## GRAPHITE (MF15A)



- 15 gauge Nylon & Spandex liner
- Superb quality Nitrile microfoam palm coating
- Second skin feel with high breathability liner
- Contact Heat Level 1
- Elasticated, coloured cuff for size indication

EN388:2016

+ A1:2018



4131A

EN 407:2020



X1XXXX

UK  
CA  
CE

Sizes: XS-XXL

Carton Quantity: 120 Pairs





## SIGMA (SN13DTQ)

VEND READY



- 13g Green UHMWPE/Spandex Liner
- Cut Level D
- Thumb Crutch Protection
- Touchscreen Capability
- Sandy Nitrile Palm Coating
- Contact heat level 1
- Elasticated, coloured cuff for size indication

EN388:2016  
+ A1:2018



4X42D

EN407:2020



X1XXXX



Sizes: XS-XXL  
Carton Quantity: 120 Pairs



## IMPACT (TS4)



- Maximum Cut F Nylon, Spandex, HPPE and TekArmor™ liner with PolyMax™ palm coating
- Back of Hand TPR Protection with Reflective Surround
- Padded Palm and Additional Thumb Crutch Protection
- Highly Dexterous (18 gauge)
- 360° Comprehensive Breathability
- Great grip in light Oily applications
- Whole palm area compatible with Touchscreens
- PolyMax™ offers great wet or dry grip
- Suitable for use in Food Industries
- Contact heat level 2
- Elasticated, coloured cuff for size indication

EN388:2016  
+ A1:2018



4X42FP

EN407:2020



X2XXXX

EN1186



Sizes: M-XXL  
Carton Quantity: 40 Pairs



**PLANETSAFE**

# PROTECT YOUR HANDS WHILST PROTECTING THE PLANET

Our Planetsafe gloves are all designed to offer a sustainable option within the hand protection market. They all feature liners made from sustainable materials and we believe this change can make a big difference, something we are all passionate about at Just 1 Source. You can also see some of the corporate changes we are making through the positive planet initiative.



Scan to find out more  
about the Positive  
Planet Initiative



# PLANETSAFE

---

PRED 18	Pred Bamboo	Page 29
RPET10DW	Pred Spruce	Page 30
RPET15A	Pred Cedar	Page 31
RPET15E	Pred Maple	Page 31







# THE BENEFITS OF BAMBOO

## > Light and Comfortable

Bamboo is lighter and softer than cotton making the gloves easier to don and extremely comfortable to wear

## > Pesticide Free

Bamboo offers more benefits to eczema sufferers compared to cotton, nylon and polyester as it is grown without any chemicals and pesticides

## > Extra Dry

Bamboo is four times more absorbent than cotton, which helps your hands to always feel dry

## > UV Radiation

Bamboo fabric offers natural protection from the sun's harmful rays, with it capable of filtering up to 97.5% of UV radiation

## BAMBOO (PRED 18)



- Highly Dexterous 15g Green Bamboo Liner
- Increased comfort and breathability due to bamboo fibre liner
- Black nitrile foam palm coating
- Liner capable of filtering up to 97.5% of UV radiation making it a great option in warm environments
- Contact Heat Level 1
- Elasticated, coloured cuff for size indication
- Plastic bottle and carbon saving

EN388:2016  
+ A1:2018



4121A

EN407:2020



X1XXXX

UK  
CA  
CE

Sizes: XS-XXL  
Carton Quantity: 120 Pairs



# THE BENEFITS OF RPET

## > Reduces Plastic Waste

Using rPET within the manufacturing process of our Planetsafe Gloves, reduces the amount of plastic that ends up in landfill and the ocean and in turn reduces the environmental damage

## > Fewer Greenhouse Gases

It emits fewer greenhouse gases like methane and carbon dioxide in the manufacturing process

## > Saves Energy

The production process uses less water and energy which reduces the CO2 emissions. The water consumption during rPET Filament fiber production is an average of around three quarters of a gallon per pound of product, which is 25 litres for every kg, whereas cotton needs over 2500 litres to produce

### SPRUCE (RPET10DW)



- 10g Recycled Polyester/Acrylic Terry/ Metal Q Brushed Liner (Recycled Post-Consumer)
- Durable foam latex palm coating
- Superb Thermal feel with dexterity remaining uncompromised
- Extended cuff length for extra thermal retention
- Contact Heat Level 2
- Contact Cold Level 2
- Elasticated, coloured cuff for size indication

EN388:2016  
+ A1:2018



2X42D

EN407:2020 EN511:2006



X2XXXX



X2X



Sizes: S-XXL  
Carton Quantity: 120 Pairs





**CEDAR (RPET15A)**

- Highly Dexterous 15g Grey/White Recycled Polyester Liner (Recycled Post-Consumer)
- Breathable back
- Black nitrile foam palm coating
- Contact Heat Level 1
- Elasticated, coloured cuff for size indication

EN388:2016  
+ A1:2018

3131X

EN407:2020



X1XXXX

UK  
CA  
CE

Sizes: XS-XXL

Carton Quantity: 120 Pairs

**MAPLE (RPET15E)**

- Comfortable and Dexterous 15g Recycled Polyester/Metal Q/Spandex Liner (Recycled Post-Consumer)
- Black sandy nitrile foam palm coating
- Nitrile thumb crotch protection
- Touchscreen compatible
- Contact Heat Level 1
- Elasticated, coloured cuff for size indication

EN388:2016  
+ A1:2018

4X43E

EN407:2020



X1XXXX

UK  
CA  
CE

Sizes: XS-XXL

Carton Quantity: 120 Pairs



**WATERSAFE**

# HELPING YOU BRAVE THE ELEMENTS

Our Watersafe range of waterproof gloves help to protect your hands in adverse weather conditions. These gloves will keep the hands dry when carrying out tasks where waterproof gloves are essential; offering superb suction grip. We also have thermal options available – the Pred Baltic and Pred Arctic.



# WATERSAFE GLOVES

---

WS1	Atlantic	Page 35
WS3	Pacific	Page 35
WS4	Baltic	Page 36
WS5	Arctic	Page 36





## ATLANTIC (WS1)



- Cut 1, 15 gauge Nylon liner
- Fully coated in smooth latex, finished with a sandy latex palm dip
- Suitable for use inside or outside, in wet or dry; cold or warm conditions
- Superb wet or dry grip
- Meets the requirements for resistance to water ingress (ISO15383)
- Contact heat level 1
- Elasticated, coloured cuff for size indication

EN388:2016  
+ A1:2018 EN407:2020



2141X



X1XXXX



UK  
CA  
CE

Sizes: S-XXL  
Carton Quantity: 120 Pairs



## PACIFIC (WS3)



- Cut C, 13 gauge Polyester and Azura liner
- Fully coated in smooth latex, finished with a sandy latex palm dip
- Suitable for use inside or outside, in wet or dry; cold or warm conditions
- Superb wet or dry grip
- Extremely comfortable and dexterous
- Elasticated, coloured cuff for size indication
- Meets the requirements for resistance to water ingress (ISO15383)

EN388:2016  
+ A1:2018



2X43C



UK  
CA  
CE

Sizes: M-XXL  
Carton Quantity: 120 Pairs



## BALTIC (WS4)



- Cut 2, 15 gauge Polyester outer liner with a 7 gauge acrylic-loop thermal inner liner
- Fully coated in Smooth Latex, finished with a Sandy Latex palm dip
- Suitable for use inside or outside, in wet or dry; cold or warm conditions
- Superb wet or dry grip
- Contact Cold Level 2
- Elasticated, coloured cuff for size indication

EN388:2016  
+ A1:2018 EN511:2006



2242X



X21



UK  
CA  
CE

Sizes: S-XXL  
Carton Quantity: 120 Pairs



## ARCTIC (WS5)



- Cut E, 13 gauge Polyester outer liner with a 7 gauge, Thermal, Acrylic, HPPE and Steel inner liner
- Fully coated in Smooth Nitrile, finished with a Sandy Nitrile palm dip
- Suitable for use inside or outside, in wet or dry; cold or warm conditions
- Superb wet or dry grip
- Contact Cold Level 2
- Contact Heat Level 2
- Elasticated, coloured cuff for size indication

EN388:2016  
+ A1:2018 EN511:2006 EN407:2020



4X43E



X21



X2XXXX

UK  
CA  
CE

Sizes: M-XXL  
Carton Quantity: 120 Pairs









## WELDING



# FEEL THE POWER, MASTER THE WELD

A range of superior quality Welding Consumables, designed by an industry powerhouse, Ron Simpson, with years of knowledge and experience all brought together to deliver an unrivalled level of comfort and safety. Why not feel the difference yourself and pick from our top tier products?



# WELDING GLOVES

PRED6	Signature Tig Gauntlet	Page 42
PRED6-GLOVE	Tig Glove	Page 42
PRED6-C	Standard Tig Gauntlet	Page 43
PRED6-D	Deerskin Tig Gauntlet	Page 43
PRED4	Standard Mig Gauntlet	Page 44
PRED4-LH	Signature Mig Gauntlet - LH	Page 44
PRED4-RH	Signature Mig Gauntlet - RH	Page 45
PRED4-16	Signature 16" Mig Gauntlet	Page 45
PRED4-GLOVE	Mig Glove	Page 47
RSW1C	Lightning Mig Gauntlet - Red	Page 47
RSW1C-BLUE	Lightning Mig Gauntlet - Blue	Page 48
RSW1C-BLUE-S	Lightning Mig Gauntlet - Small	Page 48
RSW1C-KEV	Lightning Mig Gauntlet - Twaron	Page 51
RSW1C-REV	Lightning Reversible Mig Gauntlet - Green	Page 51









# A GUIDE TO WELDING GLOVES

## TIG OR MIG?

TIG Welding (Tungsten Inert Gas) is a form of welding that requires delicate control. TIG welding gloves are usually made from materials which keep them thin and flexible, such as Goat Hide. This allows for a more dexterous feel and ultimately a more precise weld.

MIG Welding (Metal Inert Gas) is a form of welding which involves using a metal feed to melt and join metal pieces together. MIG welding gloves are typically thicker than their TIG counterparts as they provide additional protection from heat and sparks.

## WHETHER YOU WANT QUALITY OR VALUE - WE HAVE YOU COVERED

With our Signature Range of Products, you can guarantee this will hit the spot in terms of quality. All gloves are manufactured using only the highest grade of leather, with minimum thickness specifications this gives us the confidence to brand these our 'Signature' Range. Additionally, each product comes cotton lined for ultimate wearer comfort. The Signature Range has since become iconic in the Industry and is something we know will often be imitated but never replicated.

Our Lightning and Standard ranges are designed to offer a consistent quality product, with a reduction in features to achieve a lower price point. That stated, we are still passionate about these ranges and can gladly show case the differences for you to make an informed decision.

## SIGNATURE TIG GAUNTLET (PRED6)



- Great-Quality Supple Goat-Hide Gauntlet
- Leather Thumb Crotch to Protect Stitching
- Ergonomic Straight-Thumb Design for Great Dexterity
- Twaron® Heat-Resistant Thread for Increased Life-Span
- 100% Cotton Liner on the Palm and Fingers - Cotton does not melt when in contact with a flame, unlike synthetic fibres
- Durable Split-Leather Cuff

EN388:2016  
+ A1:2018



2121X

EN 407:2020



412X4X

UK  
CA  
CE

Size: 10

Carton Quantity: 100 Pairs



## TIG GLOVE (PRED6-GLOVE)



- Great-Quality Supple Goat-Hide Glove
- Leather Thumb Crotch to Protect Stitching
- Ergonomic Straight-Thumb Design for Great Dexterity
- Twaron® Heat-Resistant Thread for Increased Life-Span
- 100% Cotton Liner on the Palm and Fingers - Cotton does not melt when in contact with a flame, unlike synthetic fibres
- Durable Split-Leather Cuff

EN388:2016  
+ A1:2018



2121X

EN 407:2020



412X4X

UK  
CA  
CE

Size: 10

Carton Quantity: 50 Pairs





## STANDARD TIG GAUNTLET (PRED6-C)



- Great-Quality Supple Goat-Hide Gauntlet
- Split-Leather on the Back of Hand
- Ergonomic Straight-Thumb Design for Great Dexterity
- Twaron® Heat-Resistant Thread for Increased Life-Span
- Durable Split-Leather Cuff

EN388:2016  
+ A1:2018 EN 407:2020



2122X



413X4X

UK  
CA  
CE

Size: 10  
Carton Quantity: 100 Pairs



## DEERSKIN TIG GAUNTLET (PRED6-D)



- Great-Quality Supple Deer-Hide Gauntlet
- Leather Thumb Crotch to Protect Stitching
- Ergonomic Straight-Thumb Design for Great Dexterity
- Twaron® Heat-Resistant Thread for Increased Life-Span
- 100% Cotton Liner on the Palm and Fingers - Cotton does not melt when in contact with a flame, unlike synthetic fibres
- Durable Split-Leather Cuff

EN388:2016  
+ A1:2018 EN 407:2020



2121X



412X4X

UK  
CA  
CE

Size: 10  
Carton Quantity: 100 Pairs



## SIGNATURE MIG GAUNTLET (PRED4)



- Top-Quality Heavy-Duty Split-Leather Gauntlet
- Double-Palm and Thumb offers increased protection and padding
- Twaron® Heat-Resistant Thread for Increased Life-Span
- 100% Cotton Liner on the Palm and Fingers - Cotton does not melt when in contact with a flame, unlike synthetic fibres

EN388:2016  
+ A1:2018



4234X

EN 407:2020



41314X

UK  
CA  
CE

Size: 11  
Carton Quantity: 50 Pairs



## SIGNATURE MIG GAUNTLET - LH (PRED4-LH)



- Top-Quality Heavy-Duty Split-Leather Gauntlet
- Double-Palm and Thumb offers increased protection and padding
- Twaron® Heat-Resistant Thread for Increased Life-Span
- 100% Cotton Liner on the Palm and Fingers - Cotton does not melt when in contact with a flame, unlike synthetic fibres

EN388:2016  
+ A1:2018



4234X

EN 407:2020



41314X

UK  
CA  
CE

Size: 11  
Carton Quantity: 50 Pairs





## SIGNATURE MIG GAUNTLET - RH (PRED4-RH)



- Top-Quality Heavy-Duty Split-Leather Gauntlet
- Double-Palm and Thumb offers increased protection and padding
- Twaron® Heat-Resistant Thread for Increased Life-Span
- 100% Cotton Liner on the Palm and Fingers - Cotton does not melt when in contact with a flame, unlike synthetic fibres

EN388:2016  
+ A1:2018



4234X

EN 407:2020



41314X

UK  
CA  
CE

Size: 11

Carton Quantity: 50 Pairs



## SIGNATURE 16" MIG GAUNTLET (PRED4-16)



- Top-Quality Heavy-Duty Split-Leather Gauntlet
- Double-Palm and Thumb offers increased protection and padding
- Twaron® Heat-Resistant Thread for Increased Life-Span
- 100% Cotton Liner on the Palm and Fingers - Cotton does not melt when in contact with a flame, unlike synthetic fibres
- Increased length to 16" for increased protection on forearm

EN388:2016  
+ A1:2018



4234X

EN 407:2020



41314X

UK  
CA  
CE

Size: 11

Carton Quantity: 50 Pairs







## MIG GLOVE (PRED4-GLOVE)



- Top-Quality Heavy-Duty Split-Leather Glove
- Double-Palm and Thumb offers increased protection and padding
- Twaron® Heat-Resistant Thread for Increased Life-Span
- 100% Cotton Liner on the Palm and Fingers - Cotton does not melt when in contact with a flame, unlike synthetic fibres
- Elasticated Back of Hand for a Secure Fit

EN388:2016  
+ A1:2018



4234X

EN 407:2020



41314X

UK  
CA  
CE

Size: 10  
Carton Quantity: 50 Pairs



## LIGHTNING MIG GAUNTLET - RED (RSW1C)



- Top-Quality Split-Leather Gauntlet
- Black Leather Welting to protect stitching
- 100% Cotton Liner on the Palm and Fingers - Cotton (does not melt when in contact with a flame, unlike synthetic fibres)

EN388:2016  
+ A1:2018



3134X

EN 407:2020



413X4X

UK  
CA  
CE

Size: 11  
Carton Quantity: 60 Pairs



## LIGHTNING MIG GAUNTLET - BLUE (RSW1C-BLUE)



- Top-Quality Split-Leather Gauntlet
- Black Leather Welting to protect stitching
- 100% Cotton Liner on the Palm and Fingers - Cotton does not melt when in contact with a flame, unlike synthetic fibres

EN388:2016  
+ A1:2018



3134X

EN 407:2020



413X4X

UK  
CA  
CE

Size: 11  
Carton Quantity: 60 Pairs



## LIGHTNING MIG GAUNTLET - BLUE - SMALL (RSW1C-BLUE-S)



- Top-Quality Split-Leather Gauntlet
- Black Leather Welting to protect stitching
- 100% Cotton Liner on the Palm and Fingers - Cotton does not melt when in contact with a flame, unlike synthetic fibres
- Reduced size and length for smaller hands

EN388:2016  
+ A1:2018



3134X

EN 407:2020



413X4X

UK  
CA  
CE

Size: 9  
Carton Quantity: 60 Pairs













## LIGHTNING MIG GAUNTLET - TWARON (RSW1C-KEV)



- Top-quality split-leather gauntlet
- Reinforced gold thumb crotch for additional protection
- Twaron® Heat-resistant thread for increased life-span
- 100% Cotton liner on the palm and fingers - Cotton does not melt when in contact with a flame, unlike synthetic fibres

EN388:2016  
+ A1:2018



3134X

EN 407:2020



413X4X

UK  
CA  
CE

Size: 11  
Carton Quantity: 60 Pairs



## LIGHTNING REVERSIBLE MIG GAUNTLET (RSW1C-REV)



- Top-quality split-leather gauntlet
- White leather welting to protect stitching
- 100% Cotton liner on the palm and fingers - Cotton does not melt when in contact with a flame, unlike synthetic fibres
- Reversible design can be worn on either hand

EN388:2016  
+ A1:2018



3134X

EN 407:2020



413X4X

UK  
CA  
CE

Size: 11  
Carton Quantity: 60 Pairs



## DRIVERS



# DRIVING COMFORT IN EVERY SENSE

A well established range of Leather Riggers & Drivers gloves, developed by Ron Simpson, with innovation and solutions in every design. Don't be mistaken to thinking these gloves are all the same, they all have features that make them different, can you spot the difference?





# DRIVERS

---

PRED3-GOLD	Hide Drivers Glove - Gold	Page 54
PRED3-15	Hide Drivers Glove - Ivory	Page 55
PRED3-SB	Standard Hide Drivers Glove	Page 55





## HIDE DRIVERS GLOVE - GOLD (PRED3 GOLD)



- Great-Quality Hide Leather Driver's Glove
- Ergonomic Key-Hole Thumb Design
- 100% Cotton Fleece Lining
- Open Cuff
- Elasticated to provide a secure fit

EN388:2016  
+ A1:2018



2133X

UK  
CA  
CE

Size: 10  
Carton Quantity: 100 Pairs





## HIDE DRIVERS GLOVE - IVORY (PRED3-15)



- Great-Quality Hide Leather Driver's Glove
- Ergonomic Key-Hole Thumb Design
- 100% Cotton Fleece Lining
- Open Cuff
- Elasticated to provide a secure fit

EN388:2016  
+ A1:2018



2123X

UK  
CA  
CE

Size: 10  
Carton Quantity: 100 Pairs



## STANDARD HIDE DRIVERS GLOVE (PRED3-SB)



- Great-Quality Hide Leather Driver's Glove
- Ergonomic Key-Hole Thumb Design
- 100% Cotton Fleece Lining
- Open Cuff
- Elasticated to provide a secure fit
- Split leather rear of hand to facilitate cost saving

EN388:2016  
+ A1:2018



2122X

UK  
CA  
CE

Size: 10  
Carton Quantity: 100 Pairs



## RIGGERS

# TRADITION DOESN'T ALWAYS NEED TO BE THE SAME

Our diverse and vast range of Rigger Gloves are steeped in design innovation and History. With Ron Simpson being responsible for the design of some of the best Rigger Gloves in the UK market, we have curated this range to be more than just standard products. Whether you need Thermal Lined, Hi-Viz Coloured or price sensitive options, we can have more than just your hands covered.





# RIGGERS

PRED1	Signature Tiger Rigger	Page 58
PRED1-HV	Hi-Vis Tiger Rigger	Page 58
PRED2	Prestige Hide Rigger - Ivory	Page 59
PRED2 GOLD	Signature Hide Rigger - Gold	Page 59
RS1B	Power Plus Rigger	Page 60
RS1B/VL	Power Plus Rigger - VL	Page 60
RS1C	Power Rigger	Page 61
RS1D	Standard Rigger	Page 61
RS2DP-B	Power Plus Double Palm Rigger	Page 62
RS1C-TH	Winter Power Rigger	Page 62

## SIGNATURE TIGER RIGGER (PRED1)



- Superior-Quality Heavy-Duty Split Leather Rigger
- Heavy-Duty Rubberised Cuff
- Double Palm and Thumb offers Reinforced protection and Padding
- Leather Knuckle Patch with Hi-Vis Reflective Tape
- Strong Cotton Drill Backing
- 100% Cotton Liner on the Palm and Fingers

EN388:2016  
+ A1:2018



4243X

UK  
CA  
CE

Size: 10  
Carton Quantity: 100 Pairs



## HI-VIS TIGER RIGGER (PRED1-HV)



- Superior-Quality Heavy-Duty Split Leather Rigger
- Heavy-Duty Rubberised Cuff
- Double Palm and Thumb offers Reinforced protection and Padding
- Leather Knuckle Patch with Hi-Vis Reflective Tape
- Bright Orange Strong Cotton Drill Backing
- 100% Cotton Liner on the Palm and Fingers

EN388:2016  
+ A1:2018



4243X

UK  
CA  
CE

Size: 10  
Carton Quantity: 100 Pairs





## PRESTIGE HIDE RIGGER - IVORY (PRED2)



- Superior-Quality Hide Leather Rigger
- Heavy-Duty Rubberised Cuff
- Leather Knuckle Patch for additional protection
- Strong Cotton Drill Backing
- 100% Cotton Liner on the Palm and Fingers

EN388:2016  
+ A1:2018



2133X

UK  
CA  
CE

Size: 10  
Carton Quantity: 100 Pairs



## SIGNATURE HIDE RIGGER - GOLD (PRED2 GOLD)



- Superior-Quality Hide Leather Rigger
- Heavy-Duty Rubberised Cuff
- Leather Knuckle Patch for additional protection
- Strong Cotton Drill Backing
- 100% Cotton Liner on the Palm and Fingers

EN388:2016  
+ A1:2018



2132X

UK  
CA  
CE

Size: 10  
Carton Quantity: 100 Pairs



## POWER PLUS RIGGER (RS1B)



- Top-Quality Split-Leather Rigger
- Heavy-Duty Rubberised Cuff
- Leather Knuckle Patch for additional protection
- Strong Cotton Drill Backing
- 100% Cotton Liner on the Palm and Fingers

EN388:2016  
+ A1:2018



3143X

UK  
CA  
CE

Size: 10  
Carton Quantity: 100 Pairs



## POWER PLUS RIGGER - VL (RS1B/VL)



- Superior-Quality Heavy-Duty Split Leather Rigger
- Heavy-Duty Rubberised Cuff
- Black Strong Cotton Drill Backing
- 100% Cotton Liner on the Palm and Fingers
- Increased size of 11.5 compared to RS1B

EN388:2016  
+ A1:2018



3143X

UK  
CA  
CE

Size: 11.5  
Carton Quantity: 100 Pairs





## POWER RIGGER (RS1C)



- Great-Quality Split-Leather Rigger
- Heavy-Duty Rubberised Cuff
- Leather Knuckle Patch for additional protection
- Red Strong Cotton Drill Backing
- 100% Cotton Liner on the Palm and Fingers

EN388:2016  
+ A1:2018



3143X

UK  
CA  
CE

Size: 10  
Carton Quantity: 100 Pairs



## STANDARD RIGGER (RS1D)



- Great-Quality Split Leather Rigger with Leather Patch-Palm composition
- Durable Pasted Cuff
- Leather Knuckle Patch for additional protection
- Blue Strong Cotton Drill Backing
- 100% Cotton Liner on the Palm and Fingers

EN388:2016  
+ A1:2018



2223X

UK  
CA  
CE

Size: 10  
Carton Quantity: 100 Pairs



## POWER PLUS DOUBLE PALM RIGGER (RS2DP-B)



- Top-quality split-leather rigger
- Bright red double-palm and thumb with cross-stitching, also covering the Index finger for increased protection and padding
- Heavy-duty rubberised cuff
- Leather knuckle patch for additional protection
- Strong cotton drill backing
- 100% cotton liner on the palm and fingers

EN388:2016  
+ A1:2018



4244X

UK  
CA  
CE

Size: 10  
Carton Quantity: 100 Pairs



## WINTER POWER RIGGER (RS1C-TH)



- Top-quality split-leather rigger
- Thinsulate™ liner offers thermal properties
- Cotton drill cuff with a knit wrist extension, locking heat in the glove and preventing debris getting inside
- Leather knuckle patch with hi-vis reflective tape
- Strong cotton drill backing

EN388:2016  
+ A1:2018



3143X

UK  
CA  
CE

Size: 10  
Carton Quantity: 50 Pairs









## MISCELLANEOUS

# GLOVES & SLEEVES, PUT YOUR MIND AT EASE

Although this section contains gloves that sit outside our current range categories, rest assured that each has still been crafted with the same enthusiasm. With Sleeves to give further protection in Hot/Cut environments and cotton liners to keep your hands free of debris, we aim to keep you protected in every eventuality.



# MISCELLANEOUS

---

CCMPP	Pred Cotton Chrome	Page 66
STLKW	Pred Stockinette (Knit Wrist Medium)	Page 66
STMKW	Pred Stockinette (Knit Wrist Large)	Page 67
PRKW-10	Pred PVC Knit Wrist	Page 67
TW-SL-14	Pred TWARON Sleeve 14"	Page 68
TW-SL-18	Pred TWARON Sleeve 18"	Page 68
HPPE-SL-14	<b>Pred AZURA Sleeve 14"</b>	Page 69
HPPE-SL-18	<b>Pred AZURA Sleeve 18"</b>	Page 69

## COTTON CHROME (CCMPP)



- Heavy-Duty 8oz Cotton Drill Back
- Knit Wrist for a secure fit
- Palm area made from patches of split leather
- Patch Palm with Cross Stitching

EN388:2016  
+ A1:2018



3132X

UK  
CA  
CE

Size: 10  
Carton Quantity: 200 Pairs



## STOCKINETTE (KNIT WRIST MEDIUM) (STLKW)



- 100% Cotton Stockinette Liner
- Knitted Wrist for a secure and comfortable fit
- This glove can be worn under other gloves for additional warmth
- Also available in Large
- Minimal Risk

UK  
CA  
CE

Size: M  
Carton Quantity: 600 Pairs





## STOCKINETTE (KNIT WRIST LARGE) (STMKW)



- 100% Cotton Stockinette Liner
- Knitted Wrist for a secure and comfortable fit
- This glove can be worn under other gloves for additional warmth
- Also available in Medium
- Minimal Risk



Size: L  
Carton Quantity: 600 Pairs



## PVC (KNIT WRIST) (PRKW-10)



- Natural Cotton Liner
- Knit Wrist for a secure and comfortable fit
- Fully Coated in Smooth PVC
- Ideal for General Handling, Warehousing, and managing Non-Hazardous Waste

EN388:2016  
+ A1:2018



2121X



Size: 10  
Carton Quantity: 120 Pairs



## TWARON® SLEEVE 14" (TW-SL-14)



- 13 gauge seamless Twaron® Sleeve
- Cut Level C
- Contact Heat Level 1
- Thumb hole with elasticated cuff for secure, comfortable fit
- Twaron® has no melting point and only starts to degrade around 500°C
- Breathable material

EN388:2016  
+ A1:2018



1X4XC

EN 407:2020



X1XXXX

UK  
CA  
CE

Size: One size  
Carton Quantity: 100 Sleeves



## TWARON® SLEEVE 18" (TW-SL18)



- 13 gauge seamless Twaron® Sleeve
- Cut Level C
- Contact Heat Level 1
- Thumb hole with elasticated cuff for secure, comfortable fit
- Twaron® has no melting point and only starts to degrade around 500°C
- Breathable material

EN388:2016  
+ A1:2018



1X4XC

EN 407:2020



X1XXXX

UK  
CA  
CE

Size: One size  
Carton Quantity: 100 Sleeves





## AZURA SLEEVE 14" (HPPE-SL-14)



- 13 gauge seamless Azura Sleeve
- Cut Level E
- Thumb hole with elasticated cuff for secure, comfortable fit
- Azura is of high strength, low density, and is highly durable
- Breathable material

EN388:2016  
+ A1:2018



3X4XE



Size: One size  
Carton Quantity: 100 Sleeves



## AZURA SLEEVE 18" (HPPE-SL-18)



- 13 gauge seamless Azura Sleeve
- Cut Level E
- Thumb hole with elasticated cuff for secure, comfortable fit
- Azura is of high strength, low density, and is highly durable
- Breathable material

EN388:2016  
+ A1:2018



3X4XE



Size: One size  
Carton Quantity: 100 Sleeves



## SPECIALIST



# SPECIALIST JOBS REQUIRE SPECIALIST GLOVES

Our range of Specialist Gloves is in its infancy, with us focusing on our customers requirements driving this range forward. Whether you need something for clearing waste with a risk of finding a needle, or a glove to clear the brambles in the garden, we can now help keep you protected!





# SPECIALIST

---

PRED4-THORN    **Pred Thornproof Gauntlet**  
PRED 12        **Pred Needle**  
PRED 16        **Pred Anti Vibe**

Page 72  
Page 73  
Page 73



# THORNPROOF GAUNTLET

(PRED4-THORN)

## THORNPROOF GAUNTLET (PRED4-THORN)



- Top-quality heavy-duty, 2mm split-leather gauntlet
- Reinforced palm, thumb, and index finger
- 'Thornproof' - Hypodermic needle puncture-resistant under ASTM F2878 - 2010
- Twaron® heat-resistant thread for increased life-span

EN388:2016  
+ A1:2018



4234X

EN 407:2020



41314X

UK  
CA  
CE

Size: 11

Carton Quantity: 20 Pairs





## NEEDLE (PRED 12)



- 10 gauge Polyester, Cotton and Steel Liner
- Fully coated in foam latex offering great grip
- Hypodermic Needle Puncture-Resistant under ASTM F2878-19
- Additional PVC thumb crutch for increased wear
- Elasticated wrist with TPR velcro fastening for a secure fit

EN388:2016  
+ A1:2018



3X44F



UK  
CA  
CE

Sizes: M-XXL  
Carton Quantity: 40 Pairs



## ANTI VIBE (PRED 16)



- Anti Vibration Glove
- High Quality Black Goatskin Leather
- Black Foam Anti Vibration Material
- Black Knitted Fleece for additional comfort
- Black Elastic Wristband with Velcro Closure

EN388:2016 EN ISO 10819:2013  
+ A1:2018 +A1:2019



3122X



TM 0,731

TH 0,571

UK  
CA  
CE

Sizes: S-XXL  
Carton Quantity: 40 Pairs



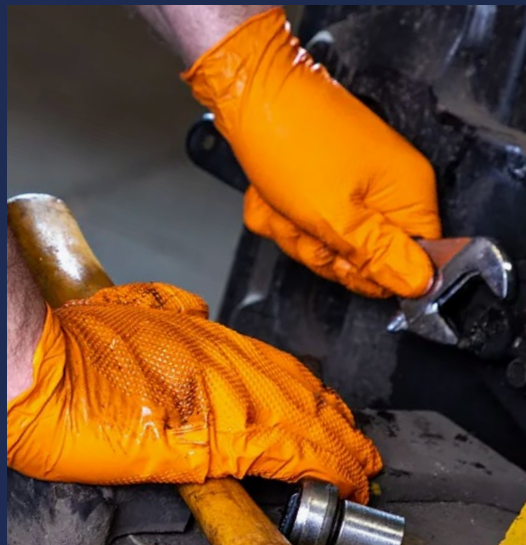
**DISPOSABLE**



# DISPOSABLE PROTECTION

We have partnered with Mercator Medical to provide a range of disposable gloves offering unrivalled protection, comfort and all produced in an environmentally friendly factory. With a variety of options; colour, thickness, weight, find the right option for you today.





# DISPOSABLE GLOVES

RP3002600	Ideall Grip (Black)	Page 76
RP3002700	Ideall Grip (Orange)	Page 77
RP300326Q	Ideall Grip (Green)	Page 78
RP300376Q	Ideall Grip (Royal Blue)	Page 79
RD301040Q	Nitrylex Black	Page 80
RD3001990	Nitrylex Classic	Page 81

## IDEALL® GRIP BLACK



- Superior Strength 5.2 mil, 6.5 gram, Powder Free Black Nitrile Glove (AQL 1.5)
- Diamond Grip Inside and Outside the Glove offers Increased Traction Grip
- Touch Screen Friendly - suitable for use with/around Food/Foodstuffs
- Excellent Chemical Resistance and a proven barrier to Toxic Fibres (i.e. Fibreglass/Asbestos)
- Superior Strength and Toughness whilst maintaining Maximum Dexterity
- Latex and Silicone Free

EN374-1:2016 EN374-5:2016 EN1186



KPT



VIRUS



Size: S-XXL

Carton Quantity: 500 Gloves

Category: CAT III Type B







## IDEALL® GRIP GREEN



- Superior Strength 7 mil, 8.6 gram, Powder Free Green Nitrile Glove (AQL 1.5)
- Diamond Grip Inside and Outside the Glove offers Increased Traction Grip
- Touch Screen Friendly - suitable for use with/around Food/Foodstuffs
- Excellent Chemical Resistance and a Proven Barrier to Toxic Fibres (i.e. Fibreglass/Asbestos)
- Superior Strength and Toughness whilst maintaining Maximum Dexterity
- Latex and Silicone Free
- Pass against EN16350:2014 (Electro Static)

EN16350:2014 EN374-1:2016 EN374-5:2016 EN1186



JKPTO

VIRUS

Size: M-XXL  
Carton Quantity: 500 Gloves  
Category: CAT III Type B





## IDEALL® GRIP ORANGE



- Superior Strength 7 mil, 8.6 gram, Powder Free Orange Nitrile Glove (AQL 1.5)
- Diamond Grip Inside and Outside the Glove offers Increased Traction Grip
- Touch Screen Friendly - suitable for use with/around Food/Foodstuffs
- Excellent Chemical Resistance and a Proven Barrier to Toxic Fibres (i.e. Fibreglass/Asbestos)
- Superior Strength and Toughness whilst maintaining Maximum Dexterity
- Latex and Silicone Free
- Pass against EN16350:2014 (Electro Static)

EN16350:2014 EN374-1:2016 EN374-5:2016 EN1186



JKPTO

VIRUS

Size: S-XXL

Carton Quantity: 500 Gloves

Category: CAT III Type B







## IDEALL® GRIP ROYAL BLUE (LONG CUFF)



- Superior Strength 7 mil, 10 gram, Powder Free Blue Nitrile Glove (AQL 1.5)
- Length 300mm to extend cuff and protection
- Diamond Grip Inside and Outside the Glove offers Increased Traction Grip
- Touch Screen Friendly - suitable for use with/around Food/Foodstuffs
- Excellent Chemical Resistance and a Proven Barrier to Toxic Fibres (i.e. Fibreglass/Asbestos)
- Superior Strength and Toughness whilst maintaining Maximum Dexterity
- Latex and Silicone Free

EN374-1:2016 EN374-5:2016 EN1186



JKPTO



VIRUS



Size: S-XXL  
Carton Quantity: 500 Gloves  
Category: CAT III Type B





## NITRYLEX® CLASSIC BLACK



- Superior Strength 2.8 mil, 3.5 gram, Powder Free Black Nitrile Glove (AQL 1.0)
- Micro-texture with additional texture on the fingertips for Improved Pinch Grip
- Touch Screen Friendly - suitable for use with/around Food/Foodstuffs
- Excellent Chemical Resistance and a Proven Barrier to Toxic Fibres (i.e. Fibreglass/Asbestos)
- Superior Strength and Toughness whilst maintaining Maximum Dexterity
- Latex and Silicone Free

EN374-1:2016

EN374-5:2016

EN1186



KPT



VIRUS



Size: S-XL

Carton Quantity: 1000 Gloves

Category: CAT III Type B





## NITRYLEX® CLASSIC DISPOSABLE



- Superior Strength 2.8 mil, 3.5 gram, Powder Free Blue Nitrile Glove (AQL 1.0)
- Micro-texture with additional texture on the fingertips for Improved Pinch Grip
- Touch Screen Friendly - suitable for use with/around Food/Foodstuffs
- Excellent Chemical Resistance and a Proven Barrier to Toxic Fibres (i.e. Fibreglass/Asbestos)
- Superior Strength and Toughness whilst maintaining Maximum Dexterity
- Latex and Silicone Free
- Available in 100's or 200's
- Conformity with medical standards EN455-1, EN455-2, EN455-3, EN455-4

EN374-1:2016 EN374-5:2016

EN1186



KPT



VIRUS



Size: S-XXL

Carton Quantity: 1000 or 2000 Gloves

Category: CAT III Type B



# UNDERSTANDING MECHANICAL STANDARDS

## EN ISO 21420:2020

### GENERAL REQUIREMENTS FOR GLOVES

The new general requirements standard for protective gloves. This standard has superseded EN 420:2003+A1:2009 and has been adopted by ISO to become a worldwide standard. Some of the key requirements listed under this standard are glove design and construction, chemical innocuousness, comfort and efficiency (sizing and dexterity) and information supplied by the manufacturer.

The protective gloves must not impair performance of the activity, while providing adequate protection from risk.

The materials present in the gloves must not, under foreseeable conditions of normal use, release substances generally known to be toxic, toxic to reproduction, carcinogenic, mutagenic, allergenic, corrosive, sensitising or irritating.

Requirements include

- Chromium VI – applicable to all leathers; less than 3mg/kg
- PH value – applicable to all materials; requirement: pH value is to be greater than 3.5 and less than 9.5. Each material must be tested separately
- Azo colourants – applicable to all dyed leathers and textiles; requirement: less than 30mg/kg for each of the carcinogenic aromatic amines listed in the analysis methods
- Dimethylformamide (DMFa) – applicable to all materials containing polyurethane (PU); less than 1,000mg/kg (1 per cent w/w)
- Polycyclic aromatic hydrocarbons (PAHs) – applicable to rubbers and plastics in direct contact with the skin; less than 1mg/kg of each of the eight restricted PAHs.

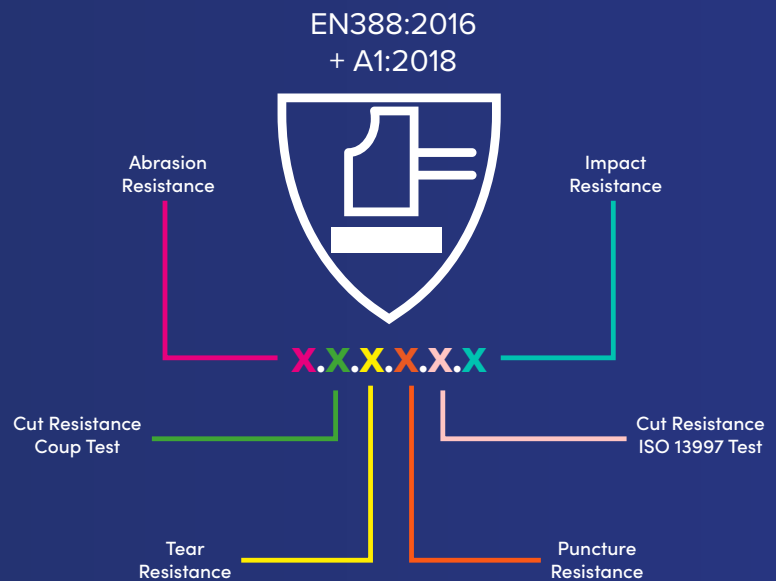
Specific details of any substance used in the glove which is known to cause allergies must be listed

Sized by reference to an agreed common European hand size, for example, minimum length.



## EN388:2016 + A1:2018 PROTECTIVE GLOVES AGAINST MECHANICAL RISKS

General-purpose protective gloves account for the largest market share of all personal protective equipment (PPE) sold and protect wearers from a wide range of hazards. To assist wearers with the selection of appropriate gloves, several European safety standards – including EN 388:2016+A1:2018 – have been developed, enabling levels of protection against different risks to be defined. These defined levels of protection enable appropriate gloves to be selected, based on the hazards and risks identified for a specific work activity. EN 388:2016+A1:2018 specifies requirements, test methods, marking and information to be supplied for protective gloves against the mechanical risks of abrasion, blade cut, tear, puncture and, if applicable, impact.



### Abrasion Resistance

A sample piece of material is cut from the palm area of the glove and is then rubbed against a 180 grit abrasive paper using a 'Martindale' type abrasion machine. The amount of cycles before a hole appears is measured and then scored. The below table showcases the number of cycles against score level:

Number of Cycles	100	500	2000	8000
Level	1	2	3	4

### Cut Resistance – Coup Test

A sample piece of material is cut from the palm area of the glove, which is then tested with a circular rotating blade with 5 Newtons of pressure being applied, until cut through the full sample material. The sharpness of the blade may vary. The cut resistance of the material is based on relative index that compares the number of cycles to cut through the material when compared with the stand fabric, as per the below table:

Cut Index	1.2	2.5	5	10	20
Level	1	2	3	4	5

### Tear Resistance

A sample piece of material is cut from the palm area of the glove and is then torn apart using a standard tensile test machine. The corresponding score is based off the Newton Force required to tear the sample apart, as demonstrated below:

Newtons Of Force	10	25	50	75
Level	1	2	3	4

### Puncture Resistance

A sample piece of material is cut from the palm area of the glove, with a defined stylus applied with varying degrees of force until successfully penetrated. The amount of Newtons of force required to penetrate the material is then logged as below:

Newton's Of Force	20	60	100	150
Level	1	2	3	4

### Cut Resistance (ISO 13997)

A sample piece of material is cut from the palm area of the glove, with a straight blade run against this with varying degrees of force. After each cut the blade is replaced and the amount of Newtons of Force is increased as per below:

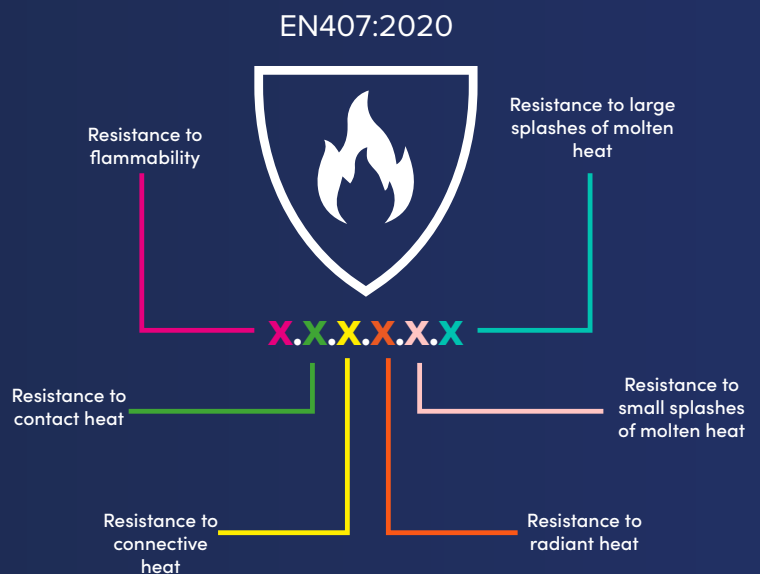
Newton's of Force	≥2	≥5	≥10	≥15	≥22	≥30
Level	A	B	C	D	E	F

### Impact Resistance

Other than the fingers, each area where impact protection is claimed shall be tested for impact attenuation by measuring the peak transmitted force. The area of protection from the glove is secured over a domed anvil and is impacted at an energy of 5J. This is a pass or fail test and can be represented with either a P (Pass), X (Fail), No marking (Not tested).

## EN407:2020 PROTECTIVE GLOVES AGAINST THERMAL STANDARDS

Many workers – such as those in manufacturing operations, foundries or catering kitchens – are exposed to thermal risks while undertaking their job. It may not be possible to simply remove these thermal hazards, and in such circumstances suitable personal protective equipment (PPE), which may include protective gloves (often made from leather), will need to be provided to the worker to protect him or her from injury. This Standard is used for all gloves and other protective equipment which protect the hands, part of the hand or arm against heat and/or fire in one or more of the following forms: flames, contact heat, convective heat, radiant heat, small splashes of molten metal or large quantities of molten metal.



### Resistance of Flammability

The material of the glove is stretched with a gas flame held against the material for 15 seconds. After the flame is removed from the material, the length of time taken for the material to stop burning/glowing is recorded as per below table:

Test	Measured In	Level 1	Level 2	Level 3	Level 4
After-burn time	Seconds	≤15	≤10	≤3	≤2
After-Glow time	Seconds	Infinity	≤120	≤25	≤5



### Resistance to Contact Heat

The material of the glove is exposed to a temperature range of 100°C – 500°C. The time taken for the material on the inside of the glove to increase by 10°C (From starting temperature of approx. 25°C) is then measured. The minimum amount of time accepted is 15 seconds.

Test	Measured In	Level 1	Level 2	Level 3	Level 4
Contact Heat	Temp in °C after 15 seconds	100°C	250°	350°C	500°C

### Resistance to Convective Heat

The palm of the glove (and any other sample material if expected to be exposed to contact heat) is exposed to a heat source. The thermal insulation of the glove is measured by the rate of temperature rise of a calorimeter on the inside of the glove while the glove outer is placed in contact with a controlled gas flame. They are then scored on the heat transfer index detailed below:

Test	Measured In	Level 1	Level 2	Level 3	Level 4
Convective Heat	Seconds	≤4	≤7	≤10	≤18

### Resistance to Radiant Heat

The material of the glove is put into a free-standing frame and the time for temperature rises of 12°C and 24°C are then measured by a calorimeter, recorded, and are expressed as radiant heat transfer indexes. The percentage heat transmission factor is calculated from the temperature rise data. See below:

Test	Measured In	Level 1	Level 2	Level 3	Level 4
Radiant Heat	Heat transfer t24 (S)	≤7	≤20	≤50	≤95

### Resistance to small splashes of molten metal

Drops of molten metal (0.5g) are put onto the glove, with the temperature inside of the glove measured. Once the temperature increases by 40°C the test is stopped and score recorded. There should be no melt through on the inner layer.

Test	Measured In	Level 1	Level 2	Level 3	Level 4
Drops of Molten Metal	Number of drops	≥10	≥15	≥25	≥35

### Resistance to large splashes of molten metal

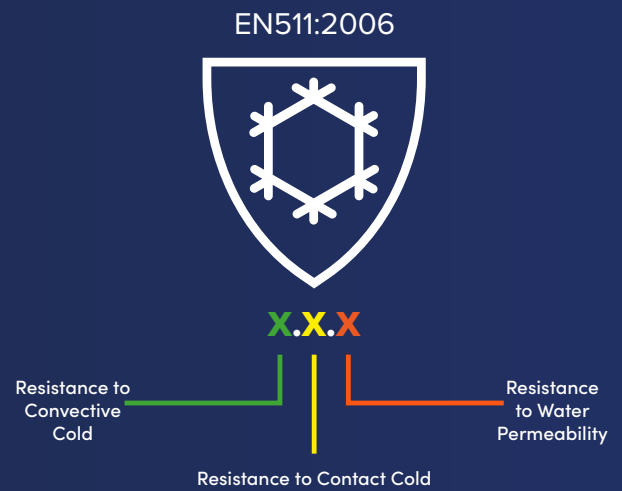
The material is tested by pouring defined quantities of molten metal onto the test specimen which is supported at an angle to the horizontal. Following pouring, damage is assessed by visual examination of an embossed thermoplastic polyvinyl chloride (PVC) sensor film placed directly behind and in contact with the test specimen during the test. Any adherence of the test metal to the surface of the glove is also recorded, and material assemblies which ignite during the test do not meet the requirement of this standard. Innermost layers of the glove are to be inspected, and must show no sign of melting and holing. Performance levels detailed below:

Test	Measured In	Level 1	Level 2	Level 3	Level 4
Molten Metal	Gram	30	60	120	200

## EN511:2006

### PROTECTIVE GLOVES AGAINST THERMAL STANDARDS

Hands are an important part of our anatomy, and are critical for virtually every activity – from driving a vehicle to operating a keyboard. However, the uses to which we put our hands mean that they are frequently exposed to the risk of injury. Furthermore, as one of the extremities of the body, our hands are also particularly vulnerable to hostile environments such as cold climates. It can be difficult or impossible to remove the hazard and, therefore, it is often more practical to provide some form of hand protection.



#### Resistance to Convective Cold

This ten minute test involves the glove being placed on a simulated hand that measures the amount of power required to maintain a temperature between 30°C and 35°C in a controlled environmental chamber. The chamber is cooled down to 20°C below that of the heated hand and constant air flow is applied. The test awards a performance level based on the amount of electrical power required to maintain this constant temperature.

Performance Level	Thermal Insulation (TR) in m <sup>2</sup> C/W
Level 1	0.10 ITR < 0.15
Level 2	0.15 ITR < 0.22
Level 3	0.22 ITR < 0.30
Level 4	0.30 ITR

#### Resistance to Contact Cold

The contact cold resistance test involves placing a piece of the glove taken from the palm side of the fingers between a hot (maintained at a temperature between 31 – 35°C) and cold metal plate. The sample is left for 30 minutes, after which the thermal resistance is calculated by determining the difference in temperature between the inner and outer surface of the glove sample.

Performance Level	Thermal Insulation (R) in m <sup>2</sup> C/W
Level 1	0.025 R < 0.050
Level 2	0.050 R < 0.100
Level 3	0.100 R < 0.150
Level 4	0.150 R

#### Resistance to Water Permeability

The water permeability test involves water permeating the fabric of the glove after 5 minutes of submersion. Unlike the other two EN 511 tests, the water penetration test is a pass/fail test. If the glove retains its permeability, then it passes with a Level 1 rating, while gloves that fail will receive a Level 0 rating.

## EN374

### PROTECTIVE GLOVES AGAINST CHEMICALS AND MICRO-ORGANISMS

#### EN374-1:2016+A1:2018

This testing covers the terminology and performance requirements for gloves with chemical protection. It also includes a list of 18 chemicals, whose code letters can be used on the glove marking to give a general indication on protection. Permeation testing is carried out using EN 16523-1. Three different types of performance level are defined and are shown opposite:



Type A gloves achieve level 2 or greater against 6 of the 18 chemicals

ISO 374-1/Type A



AJKLNT

Type B gloves achieve level 2 or greater against 3 of the 18 chemicals

ISO 374-1/Type B



AJK

Type C gloves achieve level 2 or greater against 1 of the 18 chemicals

ISO 374-1/Type C



Code	Chemical	Code	Chemical	Code	Chemical
A	Methanol	G	Diethylamine	M	Nitric acid 65%
B	Acetone	H	Tetrahydrofuran	N	Acetic acid 99%
C	Acetonitrile	I	Ethyl acetate	O	Ammonium hydroxide 25%
D	Dichloromethane	J	n-Heptane	P	Hydrogen peroxide 30%
E	Carbon Disulphide	K	Sodium hydroxide 40%	S	Hydrofluoric acid 40%
F	Toluene	L	Sulphuric Acid 96%	T	Formaldehyde 37%

#### EN374-2:2019+A1:2018

This testing covers penetration, which for this process is defined as the movement of a chemical through a material, seam, pinhole, or other imperfection when tested. There are two tests which are utilised for this section of testing; the air leak test where a glove is inflated under water (with any leaks being noted) and the water leak test where a glove is filled with water (with any leaks being noted)

#### EN 16523-1:2015+A1:2018 (Formerly EN374-3)

This specifies a test procedure to determine the resistance of protective glove materials to permeation by potentially hazardous non-gaseous chemicals under the conditions of continuous contact. Permeation is the process by which a chemical moves through a protective glove material on a molecular level. Gloves are classified according to the breakthrough time of the chemical through the glove material. A sample of the glove material is placed in contact with a challenge chemical and the rate at which this chemical travels through (permeates) the material is determined. The breakthrough time is the time at which this permeation rate exceeds  $1\mu\text{g}/\text{cm}^2/\text{min}$ . The samples are assigned performance levels depending on this breakthrough time. In order to be certified as chemically protective, the gloves must achieve one of three specified levels of protection defined in terms of breakthrough time and number of chemicals tested.

#### EN374-4:2019+A1:2018

This testing covers degradation, which is a change in glove material, typically swelling, change in appearance, or hardening. The results are expressed in a percentage format where a positive number indicates the material is weaker after testing and a negative number indicates the material has hardened during testing.

#### EN374-5:2016+A1:2018

This part of ISO 374 specifies the requirements and test methods for protective gloves intended to protect the user against micro-organisms. Penetration testing is required as per EN374-2, but gloves offering protection against viruses shall additionally pass a penetration test performed to ISO 16604:2004 (Determination of resistance of protective clothing materials to penetration by blood-borne pathogens)

## AQL

### ACCEPTABLE QUALITY LEVEL

AQL is a statistical measure used to determine the level of defects that can be considered acceptable in a batch of products. For PPE gloves, the AQL 1.5 standard is required for certification, meaning only 1.5 gloves out of every 100 can have a defect. A lower AQL is better, so AQL 1 is better than AQL 1.5, and so on.

# OUR TEAM



**Graham Murray**  
Managing Director



**Zoe Green**  
Accounts Supervisor



**Jesse Oddy**  
Office Administrator



**Laura Marie Jones**  
Office Administrator



**Dave Lawson**  
CEO



**Seamus McManus**  
Director of Sales



**Deborah Styth**  
Area Sales Manager



**Colin McLorg**  
Commercial Director



**Kirsty Ward**  
Operations Manager



**Mark Griffin**  
Country Manager  
Scotland & Ireland



**Christy Thompson**  
Office Manager



**Mark Dodsley**  
Area Sales Manager



**Paul Ellis**  
Area Sales Manager



# BESPOKE BRANDING

Gloves are a vital component of PPE and most of the time, an off the shelf product will be suitable.

However, if this is not the case, then we can gladly step in to help. Did you know we can take an idea, through development and testing, manufacture and to delivery without the hassle and as a joint venture? We can even get the certification in your company's name. We have worked on various projects with our customer base and can gladly showcase our work. I.e. the Razorpro collection (razorglove.co.uk) developed in conjunction with SAE Systems.



If you are looking to have your own range of branded gloves, we can look to facilitate this process with MOQ's as low as 1,000 pairs for Leather gloves and 12,000 pairs for Coated gloves (Range/ Packaging dependant). Our Bespoke Manufacturing solution is something our External Team will be happy to discuss with you!



# MARKETING SUPPORT & RETAIL STANDS

If you have a trade counter or retail store, why not present our products on a RPOS? These are readily available and can add a real presence to your glove displays. In addition, we can gladly support with POS, marketing fliers with your details and joint social media projects. Get in touch with [marketing@just1source.com](mailto:marketing@just1source.com) to see how we can assist.

# LOGISTICS & WAREHOUSING

Our Warehousing & Logistics partner, YDL, currently warehouse our products in Brighouse. With over £1.5 million held in stock, why not trust us to support your businesses hand protection needs?

If you need us to allocate stock, or schedule regular deliveries, speak to a member of the internal team who can liaise.

Next day delivery is offered as standard, with all orders placed and confirmed by 2.30pm. This is the service we provide; however, we cannot guarantee this offering is available in all areas of the UK.

We do ship to Northern & Southern Ireland, ask our Sales team for more information on this service offering.





# ONLINE ORDERS & THE JUST1 APP

Here at Just 1 Source & Supply we want to make the ordering process as simple and convenient as possible. Whether you prefer to order by email, telephone or online, we now have options to suit.

Our B2B Portal allows you to place orders 24/7 with all your pricing locked in on the App/Desktop Version. It also hosts a range of features:

- > Data Sheets & Technical Information at the click of a button
- > Order history
- > Stock level Indicators
- > Shopping Lists for regular orders
- > Pricing Preloaded (Only see the pricing you pay)
- > Stored Addresses for multiple delivery points

Please scan the QR Code to be taken to the desktop B2B portal.

Alternatively, give a member of our team a call and when can sign you up!



Scan to  
download

# ACCREDITATIONS & MEMBERSHIPS

We believe it is essential for us to be a part of the British Safety Industry Federation's (BSiF) Registered Safety Supplier Scheme (RSSS), to showcase the quality and conformity of the goods we sell.

All PPE must be correctly tested and certified to meet the appropriate European standard. Unfortunately, the quantity of non-approved product being sold into the UK is on the increase, especially post Covid, where even the Government were caught out with non-compliant PPE.

To help combat non-compliant and unfit for purpose PPE being sold, the BSIF has created the Registered Safety Supplier (RSSS) scheme. Companies displaying the scheme's logo have

signed a binding declaration that the safety equipment they offer meets the appropriate standards, fully complies with the PPE regulations and is appropriately CE & UKCA marked.

All Registered Safety Suppliers are independently audited to confirm compliance with the scheme's requirements.

Remember, by using a Registered Safety Supplier you can be sure you will only be supplied with genuine, appropriately approved product and you will receive sound advice without any attempt to mislead you.



**BSiF**  
BRITISH SAFETY INDUSTRY FEDERATION



# BUYING GROUPS

## NMBS - CONSTRUCTION

Since 2015, we have been a proud partner to the NMBS membership and continue to grow with the members every year through new member addition and Just 1 Source & Supply product developments.

NMBS themselves were established in 1963 and is a centralised buying society for independent Builders, Timber, Hardware, Plumbing and Heating Merchants.

## TROY - INDUSTRIAL

In 2013 we first started to get involved with buying groups and THS was the first we partnered with us also supporting the TROY group since 2018, which now encompasses THS. As a premium partner to TROY, we very much value this partnership with over £950K in sales annually with the members.

TROY were established in 1986 to build a better future for independent distributors of industrial suppliers by combining their buying power to gain competitive pricing from the market-leading manufacturers in the industry.

## EUROSAFE - PPE

Eursoafe are the only UK & Ireland PPE buying group. As a growing alliance of some of the very best PPE Distributors in the UK & Ireland. With over 50 localised branches, all of whom being BSIF registered, you can be sure that when buying from the membership that the products purchased comply with EU legislation.

We continue to grow year on year with the members and often partake in joint ventures to support the growth.

## PDP - AUTOMOTIVE

PDP is an automotive buying group formed in 2005 by several likeminded Motor Factors who realised that by being part of a large National Buying Group they were losing the ability to shape their own future for the specific needs of their businesses.

We have been a strong supporter of the group, with stock held at their NDC since 2022.



**HANDS  
PROTECTED;  
WORK PERFECTED**



# A MESSAGE FROM OUR MD

Since joining Just 1 Source & Supply Ltd in 2014 we have seen some amazing developments, not just in our range of products, but also in our team. It is something that I am exceptionally proud of and know that as we continue our journey, we strive to create a product offering that solves current problems in the hand protection market.

It is a pleasure to support and work in conjunction with some of the leading distributors in the UK and Ireland, with this being underpinned by our membership of BSIF, and their Registered Safety Supplier Scheme. With our policy of not trading directly with end users, it has driven our team to collaborate with Distributors and it is with real pride that I can say, a lot have become friends. This is also

something which is true for our relationships with our partner factories, all of whom support us and openly receive audits every year.

As we continue to grow and develop our range, we must have a focus on sustainable solutions, not only in products but also in the ways that these are manufactured, something we now measure and will be a real focal point to steer the business forward. We will endeavour to introduce innovative products with new materials, use cleaner vessels to ship and even improve the ways in which to work, all in a bid to reduce CO2 emissions in the total supply chain.

Please join us as we maintain our growth and continue to add value, safety, and sustainability to your business as well as ours.



A stylized, handwritten signature in white ink, appearing to read 'Sammy'.



[just1source.com](http://just1source.com)



01653 617718



Yorkshire House, Barton Hill, York,  
YO60 7JX